

Anti-MOUSE IgG2a (Texas Red™ Conjugated) Pre-adsorbed Secondary Antibody
Goat Polyclonal, Texas Red®
Catalog # ASR2732**Specification****Anti-MOUSE IgG2a (Texas Red™ Conjugated) Pre-adsorbed Secondary Antibody - Product Information**

Description	Anti-MOUSE IgG2a (Gamma 2a chain) (GOAT) Antibody Texas Red™ Conjugated (Min Cross Bv, Hu, and Rb Serum Proteins) Goat
Host	Texas Red®
Conjugate	2.1 moles Texas Red® per mole of IgG
FP Value	Mouse
Target Species	Mouse
Reactivity	Polyclonal
Clonality	WB, IF, IC
Application	FLISA 1:10,000-1:50,000;IF Microscopy 1:1,000-1:5,000;Western Blot 1:4,000-1:20,000;Immunochemistry 1:1,000-1:5,000
Application Note	Lyophilized
Physical State	IgG
Host Isotype	IgG2a
Target Isotype	0.02 M Potassium Phosphate, 0.15 M Sodium Chloride, pH 7.2
Buffer	Mouse IgG2a heavy chain
Immunogen	1.0 mL
Reconstitution Volume	Restore with deionized water (or equivalent)
Reconstitution Buffer	10 mg/mL Bovine Serum Albumin (BSA) - Immunoglobulin and Protease free
Stabilizer	0.01% (w/v) Sodium Azide
Preservative	

Anti-MOUSE IgG2a (Texas Red™ Conjugated) Pre-adsorbed Secondary Antibody - Additional Information**Shipping Condition**

Ambient

Purity

MOUSE IgG2a Antibody was prepared from monospecific antiserum by immunoaffinity chromatography using antigens coupled to agarose beads followed by solid phase adsorption(s) to remove any unwanted reactivities. Assay by immunoelectrophoresis resulted in a single precipitin arc against anti-Goat Serum, Mouse Serum and Mouse IgG2a. Specificity was confirmed by ELISA at less than 1% cross-reactivity against other mouse heavy or light chain isotypes. No reaction was observed against Bovine, Human, and Rabbit Serum Proteins. Specificity was confirmed by ELISA at less than 1% of target signal.

Storage Condition

Store vial at 4° C prior to restoration. For extended storage aliquot contents and freeze at -20° C or below. Avoid cycles of freezing and thawing. Centrifuge product if not completely clear after standing at room temperature. This product is stable for several weeks at 4° C as an undiluted liquid. Dilute only prior to immediate use.

Precautions Note

This product is for research use only and is not intended for therapeutic or diagnostic applications.

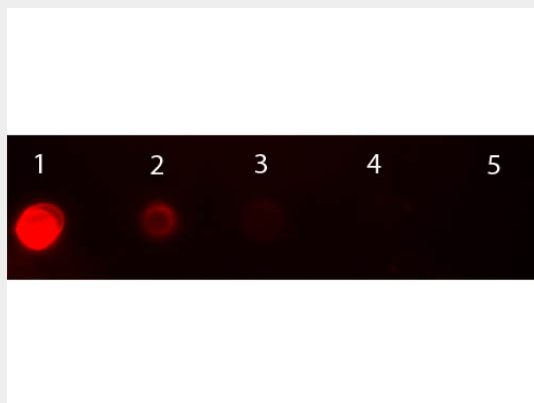
Anti-MOUSE IgG2a (Texas Red™ Conjugated) Pre-adsorbed Secondary Antibody - Protein Information

Anti-MOUSE IgG2a (Texas Red™ Conjugated) Pre-adsorbed Secondary Antibody - Protocols

Provided below are standard protocols that you may find useful for product applications.

- [Western Blot](#)
- [Blocking Peptides](#)
- [Dot Blot](#)
- [Immunohistochemistry](#)
- [Immunofluorescence](#)
- [Immunoprecipitation](#)
- [Flow Cytometry](#)
- [Cell Culture](#)

Anti-MOUSE IgG2a (Texas Red™ Conjugated) Pre-adsorbed Secondary Antibody - Images



Dot Blot of Goat anti-Mouse IgG2a Antibody Texas Red™ Conjugated Pre-absorbed. Antigen: Mouse IgG2a. Load: Lane 1 - 200 ng Lane 2 - 66.7 ng Lane 3 - 22.2 ng Lane 4 - 7.41 ng Lane 5 - 2.47 ng. Primary antibody: n/a. Secondary antibody: Goat anti-Mouse IgG2a Antibody Texas Red™ Conjugated Pre-absorbed at 1:1,000 for 1 HR at RT. Block: MB-070 for 1 HR at RT.

Anti-MOUSE IgG2a (Texas Red™ Conjugated) Pre-adsorbed Secondary Antibody - Background

Mouse IgG2a secondary antibody is available in a variety of formats. This product is suitable for multiplex analysis, including multicolor imaging, utilizing various commercial platforms.